

# Carlisle Pump Station Drain Pipe & Potranco Road Interconnect

Hector Vasquez Jr., EIT

Project Engineer

Jim Pedraza, P.E.

Manager – Production Engineering

Janie Powell

Contract Administrator

Marisol V. Robles

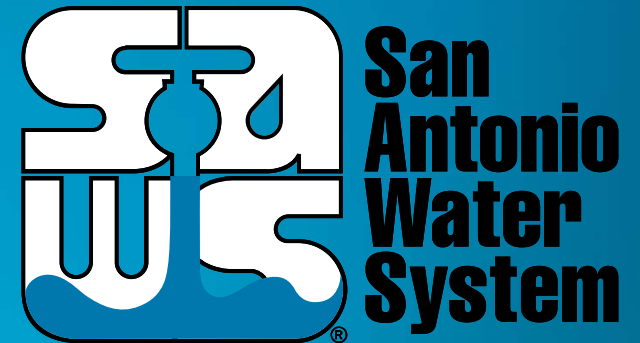
SMWVB Program Manager

Ernest T. Maestas, P.E.

Maestas & Associates, Inc. – Design Consultant

Michael Pieprzica, P.E.

Unitech Consulting Engineers, Inc. – Design Consultant



Non-Mandatory Pre-Bid Meeting

March 29, 2019

MAKING SAN ANTONIO  
**WATERFUL**



## Oral Statements

Oral statements or discussion during the pre-bid meeting today will not be binding, nor will it change or affect the terms or conditions within the Plans and Specifications of this Project. Changes, if any, will be addressed in writing only via an Addendum.

# Agenda

- General Information
- Small, Minority, Women and Veteran-Owned Business (SMWVVB Requirements)
- Contract Requirements
- Bid Packet Preparation
- Addendums
- Bid Opening Dates/Time
- Vendor Registration
- Technical Information

Carlisle Pump Station Drain Pipe & Potranco Road Interconnect



# General Information

- Non-mandatory pre-bid meeting
- Attendees should sign-in and sign-in sheet will be posted on SAWS website
- Construction services being procured through IFB

# Aspirational SMWB Goal

Industry	SMWB Goal
Construction	20%

Carlisle Pump Station Drain Pipe & Potranco Road Interconnect



## Accepted SMWVB Certification Agency

- Minority Business Enterprise (MBE) (Includes AABE; ABE; HABE and NABE)
- Small Business Enterprise (SBE)
- Woman-owned Business Enterprise (WBE)
- Veteran-owned Business Enterprise (Tracked)

## Accepted SMWVB Certification Agency

- **South Central Texas Regional Certification Agency**  
(Includes the Texas Historically Underutilized Business “HUB” Program)

### Minimum Qualifications for SMWVB recognition:

- SBE-Certified (even MBEs and WBEs)
- **Local office or local equipment yard**

# Good Faith Effort Plan (GFEP) FAQs

- **Q: Is the 20% SMWB goal mandatory?**

A: No, but we ask prime contractors to do their best with good faith outreach efforts. If the goal is not met, proof of outreach efforts is required with the submittal.

- **Q: What if I am having trouble finding SMWB subcontractors?**

A: Please email the SMWVB Program Manager with the scopes of work you are seeking. You will receive lists of local SMWVB-certified firms to contact.

- **Q: What if my business is SMWB-certified? Do I need to find SMWB subs?**

A: If your firm is SMWVB-certified, you will most likely meet the goal. However, the GFEP is a required document, and a good faith outreach effort is still necessary.

- **Q: Do I need to include all my subcontractors in the GFEP or just those that qualify towards the SMWB goal?**

A: All subcontractors need to be included in the GFEP, even those that may not count towards the SMWB goal.

- **Q: What if I have questions about the GFEP?**

A: Please contact the SMWVB Program Manager at 210-233-3420, or at [Marisol.Robles@saws.org](mailto:Marisol.Robles@saws.org). GFEP questions can be asked at any time before the submittal is due.



# S.P.U.R. System

- Subcontractor and Supplier Payment Tracking
- Subconsultant addition, substitution, or removal requests.
- LCPtracker
- Retainage



**San Antonio Water System**

[OUR MAIN SITE](#) [CONTACT SUPPORT](#)

## Subcontractor Payment & Utilization Reporting System

[Log In](#)

**System Training**

Learn how to fully utilize our system with a live trainer

[Training](#)

**About the System**

Learn more about this system and how it works today

[Information for Vendors](#)

**Account Access**

Lookup Vendor accounts or reset user passwords

[Account Lookup](#)

[Forgot Password](#)

Carlisle Pump Station Drain Pipe & Potranco Road Interconnect



# Contract Requirements

## Prevailing Wage Rate and Labor Standards – Section 2.10 of the General Conditions

- Certified payroll to be submitted on weekly basis
- Wage decisions are included within the specifications
- Contractors to utilize LCP Tracker
- Site visits are random and unannounced
- Interviews will be conducted and will be private & confidential
- Payroll records are subject to review
- All apprenticeship programs will need to be approved by Department of Labor prior to starting
- Contractors are responsible for sub-contractor payroll
- Late payrolls delay contractor payments from SAWS

Carlisle Pump Station Drain Pipe & Potranco Road Interconnect



# Contract Requirements

- Insurance requirements are found in Section 5.7 of the GCs
  - Builder's Risk is replaced by Installation Floater (see Supplemental Conditions)
  - Maintain insurance coverage during the construction of this Project
- Compliant prior to executing the contract
- Will ask for insurance prior to Board award to expedite execution of the contract

# Bid Packet Preparation

- Utilize the Bid Packet Checklist within the specifications
- SAWS is requesting that the Statement of Bidder's Experience be completed and included by all bidders
- Double check all mathematical calculations and verify all extensions
- Addendums are now acknowledged on the Bid Proposals
- References and contact information must be verified prior to submitting bid(s)

# Addendum(s)

## Revisions, Clarifications, Questions and Answers (Q&A's)

- Questions deadline is April 2, 2019 by 2:00 P.M.
- Q&A's will be posted on SAWS website on April 9, 2019 by 10 A.M.
- Check our website regularly for the addendum posting.
- It is possible to have multiple addendums during the time frame in addition to the scheduled final addendum

## Bid Opening Dates/Times

**April 16, 2019 at 2:00 P.M.**

- Bids may not be late
- Make arrangements if mailing and send directly to Contract Administration
- If delivering in person, bid packets will be turned in at Counter Services

Carlisle Pump Station Drain Pipe & Potranco Road Interconnect



# Vendor Registration & Notification (VRN)

## Reasons to Register in the VRN

- Receive bid notices directly in your email “Inbox”.
- Download bid documents.
- Subscribe to specific bids.
- Receive addendum notifications.

[http://www.saws.org/business\\_center/vendor/register.cfm](http://www.saws.org/business_center/vendor/register.cfm)

Carlisle Pump Station Drain Pipe & Potranco Road Interconnect



# Contact Information

<u>Contact Name</u>	<u>Title</u>	<u>Telephone Number</u>	<u>Email address</u>
Janie M. Powell	Contract Administrator	210-233-2443	<a href="mailto:Janie.Powell@saws.org">Janie.Powell@saws.org</a>
Marisol Robles	SMWVB Program Manager	210-233-3420	<a href="mailto:Marisol.Robles@saws.org">Marisol.Robles@saws.org</a>

## REMINDER

Please be advised that Bidders are prohibited from communicating with any other SAWS staff, the Consultant, the Developer, or City of San Antonio officials regarding this IFB up until the contract is awarded as outlined in the Instructions to Bidders



## Bid Overview

The construction and installation of 4'x4'x4' Junction Box, approximately 71 LF of 24-inch reinforced concrete pipe and site work to accommodate the construction for the Carlisle Pump Station Drain Pipe Project, SAWWS Job No. 18-6007. Potranco Road/Farm Road 1957 interconnecting water main for SAWWS Job No. 17-7003 will require jacking, boring, or tunneling a 24-inch diameter steel casing with a 12-inch ductile iron water main carrier across and appurtenant work.

- Completion is scheduled for 90 calendar days

## Supplemental & Special Conditions for Carlisle Pump Station

- Liquidated Damages (\$1,180.00 per day)
- Statement of Bidder's Experience will be required.
  - There are a total of 3 projects that must have been completed by the Prime Contractor firm using the Prime Contractor's staff and equipment. The projects must demonstrate the following:
    - Construction of a minimum of 100 LF by Open Cut for new storm sewer reinforce concrete pipe and tie-in to existing storm sewer.
    - Precast or Cast in Place Concrete junction box.
    - The projects are to be completed between 2013 and 2019.
    - \* Note not all minimum requirements are listed above. See Statement of Bidder's Experience for full list.

Carlisle Pump Station Drain Pipe & Potranco Road Interconnect



# Project Location-Carlisle Pump Station



Carlisle Pump Station Drain Pipe & Potranco Road Interconnect



## Project Background

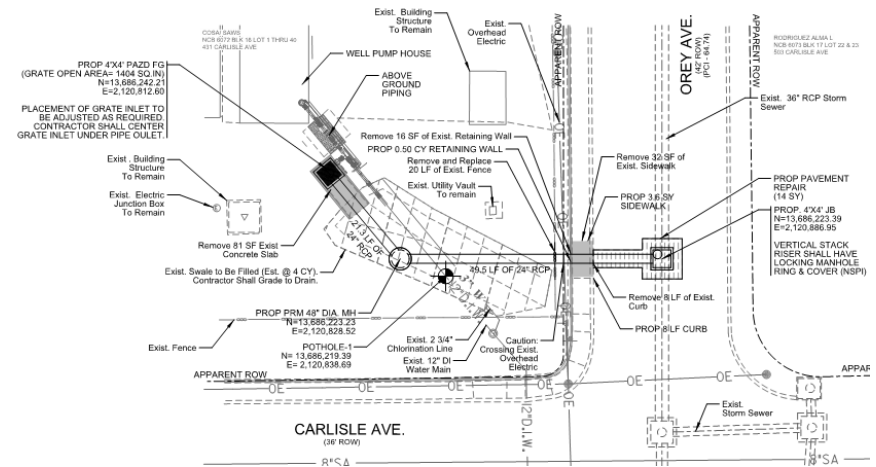
- SAWS Carlisle Pump Station is in need of a drainage system to alleviate localized ponding. The drain pipe discharges on site and does not currently drain to an underground system.



Carlisle Pump Station Drain Pipe & Potranco Road Interconnect

# Project Scope

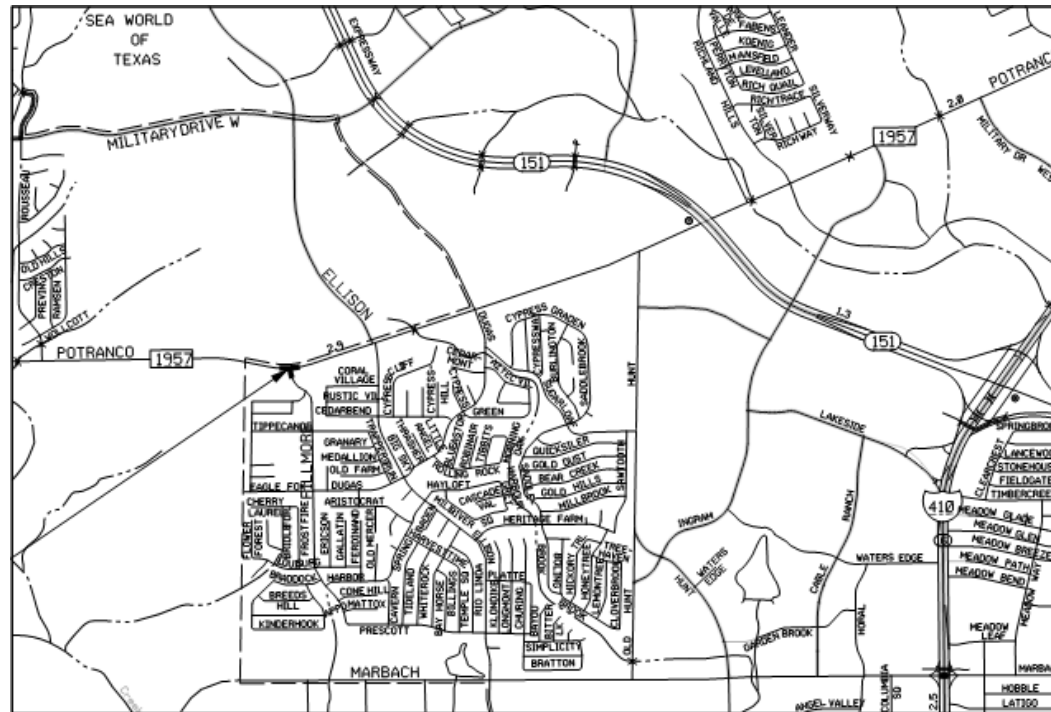
- Installation of a proposed 4'x4' Grate Inlet to capture the discharge outflow of the drain pipe.
- Installation of 24-inch RCP to tie-in to an existing 36-inch RCP storm sewer.



Carlisle Pump Station Drain Pipe & Potranco Road Interconnect



# Project Location – Potranco Road Interconnect



Carlisle Pump Station Drain Pipe & Potranco Road Interconnect



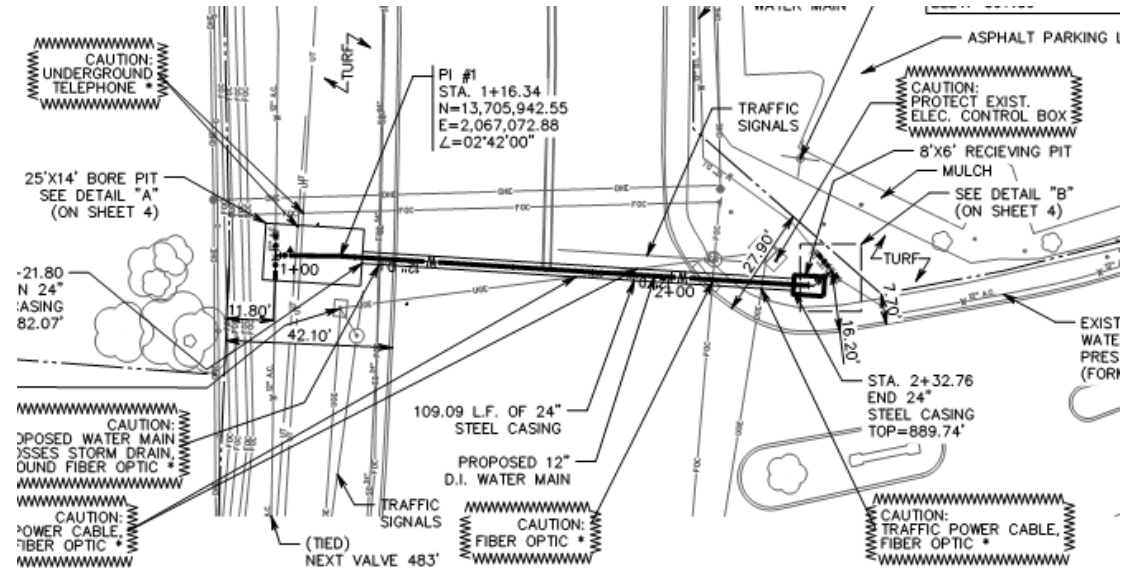
## Project Background

- SAWS Will be integrating PZ – 7 to the adjacent DSP system (combine pressure zones) to decommission a nearby pump station.

Carlisle Pump Station Drain Pipe & Potranco Road Interconnect

# Project Scope

- Cut in Tee's with Gate Valves (to reduce down time of 12" Mains on both sides).
- Bore Under Potranco.
- Tie back in to gate valves.



Carlisle Pump Station Drain Pipe & Potranco Road Interconnect





# Carlisle Pump Station Drain Pipe & Potranco Road Interconnect

Hector Vasquez Jr., EIT

Project Engineer

Jim Pedraza, P.E.

Manager – Production Engineering

Janie Powell

Contract Administrator

Marisol V. Robles

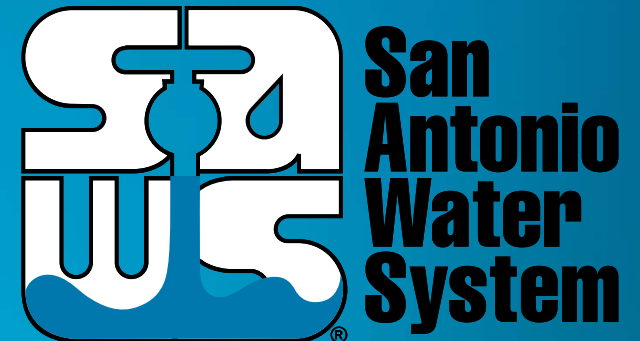
SMWVB Program Manager

Ernest T. Maestas, P.E.

Maestas & Associates, Inc. – Design Consultant

Michael Pieprzica, P.E.

Unitech Consulting Engineers, Inc. – Design Consultant



Non-Mandatory Pre-Bid Meeting

March 29, 2019

MAKING SAN ANTONIO  
**WATERFUL**

